

## TECHNICAL SPECIFICATION

Model	H300	H520
Functions	Frame & Truss	Frame & Truss
Section	C & U	C & U
Product Size (1) (2)	65, 75, or 89mm 2.5", 3" or 3.5"	65, 75, 89 or 100mm 2.5", 3", 3.5" or 4"
Material Thickness	0.55mm - 1.2mm	0.55mm - 1.2mm
Control	Touch Screen with Windows XP	Touch Screen with Windows XP
Software Included	Howick Panel Software X 2	Howick Panel Software X 2
Design Software Options	Any CAD Software dedicated to Steel Frames/Trusses	Any CAD Software dedicated to Steel Frames/Trusses
Production Rate	350 - 700 m/hour 1150 - 2300 feet/hour	300 - 700 m/hour 990 - 2300 feet/hour
Remote Access	Standard	Standard
Motor Power	4.0kW (5.5hp)	4.0kW (5.5hp)
Hydraulic Power	4.0kW (5.5hp)	4.0kW (5.5hp)
Cut Off	End Bearing	End Bearing
Service Hole Small	•	•
Service Hole Large	—	•
Web Notch	•	•
Lip Notch	•	•
Web Hole	•	•
Flange Punch	Dimple	Dimple
Tab Tool	—	—
Swage	•	•
Truss End Mitre	—	•
Electrical Req.	400 - 460V 50 - 60 Hz	400 - 460V 50 - 60 Hz
Hydraulic Tank	40 Litre (10.5 gal) with Accumulator & Cooler	40 Litre (10.5 gal) with Accumulator & Cooler
Dim. W x L x H	2.7 x 0.6 x 1.4	3.4 x 0.75 x 1.4
Weight	1525kg (3360lb)	1900kg (4180lb)
Decoiler	1.5 Tonne Powered (3300lb)	1.5 Tonne Powered (3300lb)

- NOTES: 1. Machines are factory set to produce one profile size  
 2. Other web sizes available by request  
 3. Machines are factory set to produce within 2 sequential gauges range  
 4. Refer to our website for approved and tested software design packages

Specifications may change without notice



www.howickltd.com



# Howick

DESIGNERS AND MANUFACTURERS OF THE  
WORLD'S BEST STEEL FRAMING MACHINES

Framing Applications  
Low Cost Housing System.



## Howick

DESIGNERS AND MANUFACTURERS OF THE  
WORLD'S BEST STEEL FRAMING MACHINES

### HEAD OFFICE SALES

New Zealand & International  
Tel: +64 9 534 5569

sales@howickltd.com

### UK OFFICE SALES

UK, Europe & Middle East  
Tel: +44 1423 888291

uksales@howickltd.com

Up-to-date contact details for all countries are always available on our website.

www.howickltd.com





RESIDENTIAL

COMMERCIAL

PORTABLE DWELLINGS

STORAGE

TRUSSES

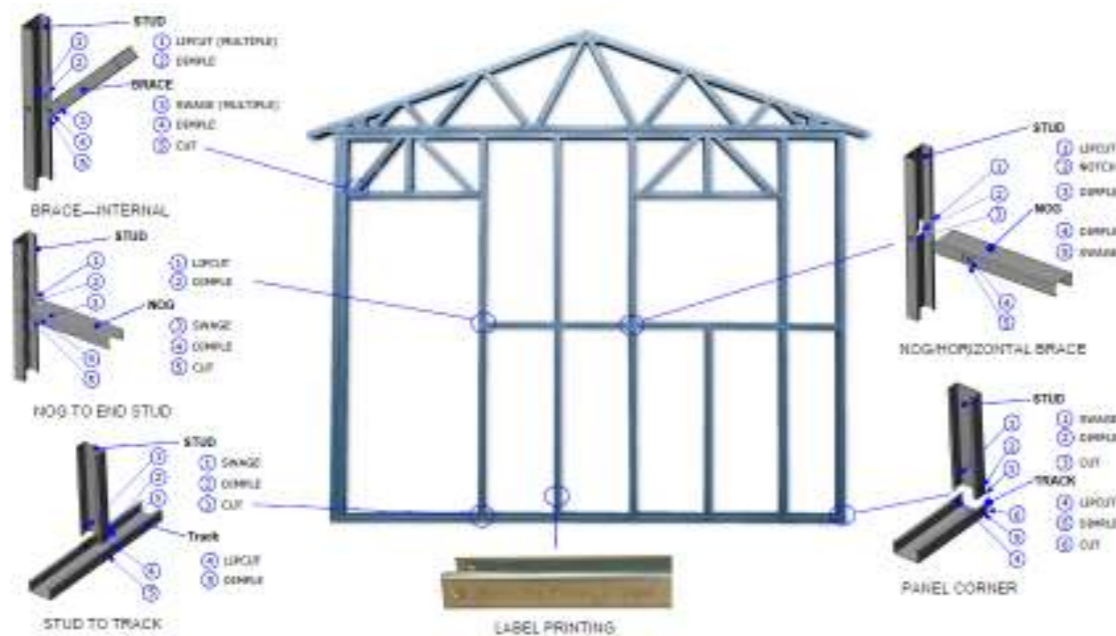
PODS

FLOORS

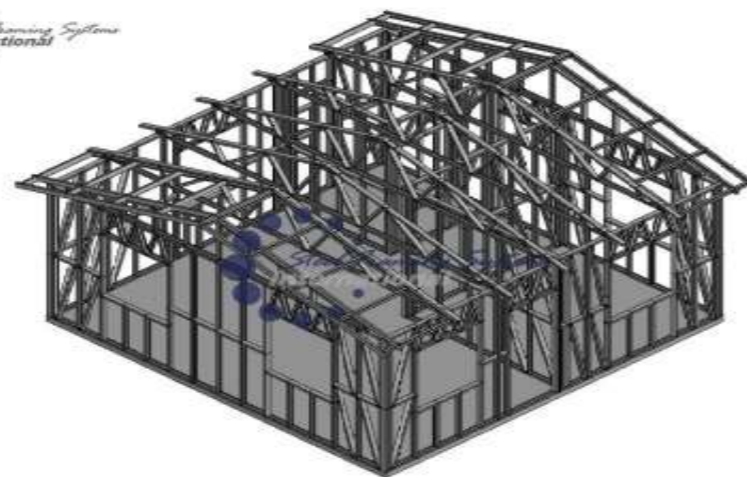
Steel Framing is a good answer for the huge need for low cost housing in developing nations and also for disaster relief.

The building structure including all the walls and roof trusses can easily be produced from the H300 or H520 Framing machine.

The frames and trusses 40 sq m building can be produced in 1 1/2 hours ready for assembly.



All the components are finished ready for assembly with the location dimples and pre punched screw/rivet holes ready for assembly. and clearly marked.



40 sq m sample building design supplied by SFS International.

[www.howickltd.com](http://www.howickltd.com)

Once the structure is erected it can then be clad and fitted out with locally available products or alternatively a corrugate machine such as Howick's Double Deck Corrugator could be supplied which produces both a walling and roofing profile from a single machine.

In remote areas or for large sites Howick's Mobile Factory Units allow the framing machines to be transported easily and secured while on site.



Howick's Partners SFS International and DEM can offer customised turn key designs including building design, plans and engineering details required for different regions.

More information is available at [www.sfsint.com](http://www.sfsint.com) or [www.lightgaugesteel.co.uk](http://www.lightgaugesteel.co.uk)



Typical low cost building clad with steel.

