



Howick

DESIGNERS AND MANUFACTURERS OF THE
WORLDS BEST STEEL FRAMING MACHINES





RESIDENTIAL

COMMERCIAL

PORTABLE
DWELLINGS

STORAGE

COMPANY

For over 30 years **Howick** has been designing and manufacturing Steel Framing Machines. **Howick's** drive for innovation and quality has led them to become the designers and manufacturers of the worlds best steel framing machines.

FRAMING / TRUSS MACHINES

The **Howick Framing Machines** have been specifically designed for Frame Manufacturers to make their production as easy and efficient as possible.

Our machines offer you a true competitive advantage in end to end construction systems.

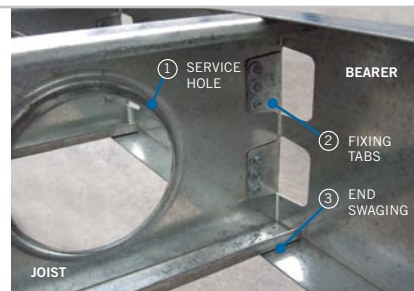
- Accept data from any appropriate CAD framing design Software
- Supplied complete with an open language (CSV) control system running on Windows XP software
- With the machine taking the instruction code directly from the CAD software all walls, floors, roofs and trusses are made exactly as designed and engineered
- **Howick's** unique **end bearing** stud has allowed construction of up to 11 stories
- All Machinery is CE compliant

FLOOR CASSETTE MACHINE

Howick's Floor Cassette machine allows the efficient production of whole floor assemblies from one machine without any changeovers.

Large swaged service holes enable the fitting of services on site with ease.

The Tab connection for Joist to bearer gives the manufacturer the option to assemble the floor either on site or in the factory.

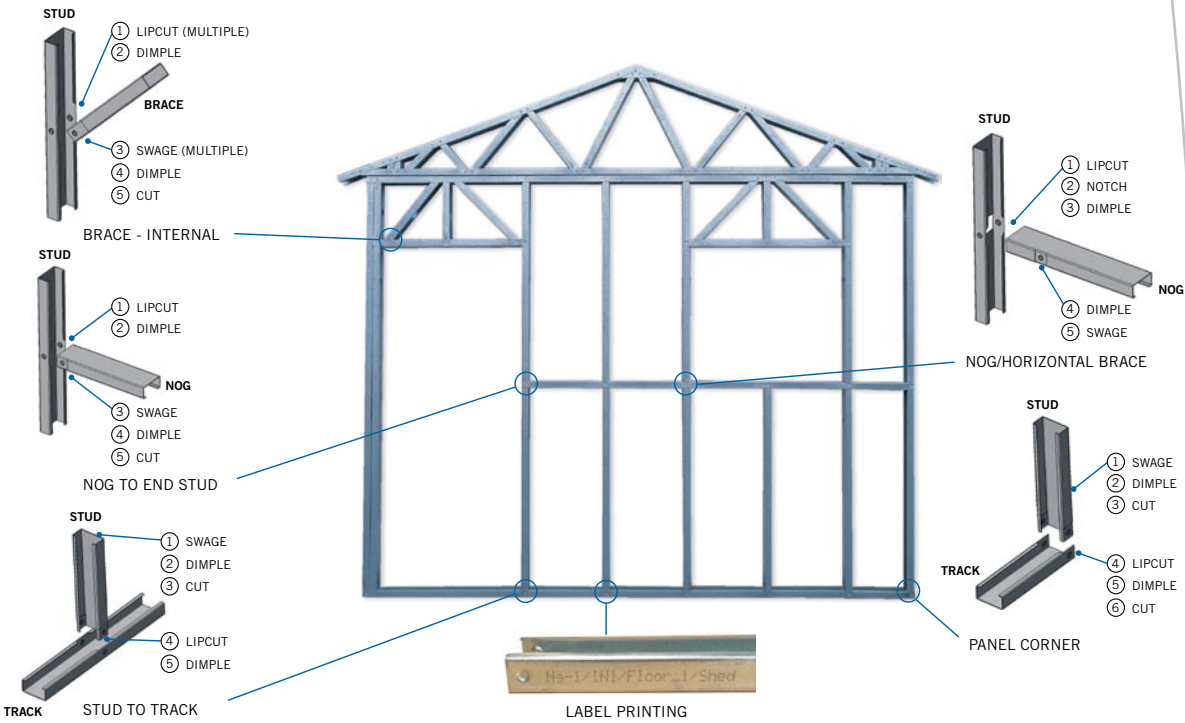




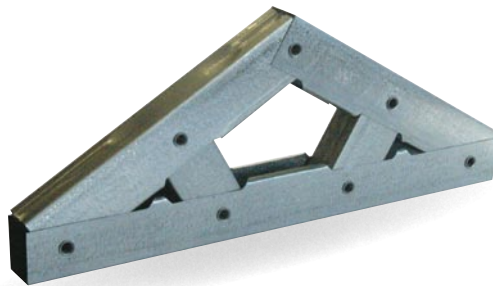
TRUSSES

PODS

FLOORS



H400 TRUSS MACHINE



The **Howick** H400 Truss Machine is a sophisticated rollforming mill that produces completed self jiggling truss components ready for assembly eliminating the need to manually cut the components to size.

Once the roof structure has been designed using a CAD package the trusses are then loaded into the touch screen PC and produced by the Rollformer. Each component is labelled with the printers to match the assembly drawings. The components can then be assembled offsite or packaged into kits for assembly onsite.



Superior truss connections using the new **Howick** double ended rivet.

NO LICENCE FEES OR TOLL ROLLS

Howick machines are provided as a complete manufacturing unit, free of on going royalties or "toll roll" fees. This combined with the open interface gives the customer freedom of choice of software and dramatically reduces the cost of long term ownership.



TECHNICAL SPECIFICATION

Model	H320	H400	H520	H560	H600
Functions	Frame & Truss	Truss	Frame & Truss	Frame & Truss	Floor Joist
Section	C & U	C & U	C & U	C & U	C & U
Product Size (1) (2)	65, 75, or 89mm 2.5", 3" or 3.5"	45mm 1.75"	65, 75, 89 or 100mm 2.5", 3", 3.5" or 4"	75, 89, 100mm or 150mm 3", 3.5", 4" or 6"	250mm 10"
Material Thickness	0.55mm - 1.2mm	0.75mm - 0.95mm	0.55mm - 1.2mm	0.95mm - 1.6mm	2.0mm
Control	Touch Screen with Windows XP	Touch Screen with Windows XP	Touch Screen with Windows XP	Touch Screen with Windows XP	Touch Screen with Windows XP
Software Included	Howick Panel Software X 2		Howick Panel Software X 2	Howick Panel Software X 2	Howick Panel Software X 2
Design Software Options	Any CAD Software dedicated to Steel Frames/Trusses	Any CAD Software dedicated to Steel Frames/Trusses	Any CAD Software dedicated to Steel Frames/Trusses	Any CAD Software dedicated to Steel Frames/Trusses	Any CAD Software dedicated to Steel Frames/Trusses
Production Rate	350 - 700 m/hour 1150 - 2300 feet/hour	300 - 700 m/hour 990 - 2300 feet/hour	300 - 700 m/hour 990 - 2300 feet/hour	300 - 700 m/hour 990 - 2300 feet/hour	300 - 500 m/hour 990 - 1980 feet/hour
Remote Access	Standard	Standard	Standard	Standard	Standard
Motor Power	4.0kW (5.5hp)	4.0kW (5.5hp)	4.0kW (5.5hp)	7.5kW (10hp)	11.0kW (15hp)
Hydraulic Power	4.0kW (5.5hp)	4.0kW (5.5hp)	4.0kW (5.5hp)	4.0kW (5.5hp)	4.0kW (5.5hp)
Cut Off	End Bearing	Standard	End Bearing	End Bearing	End Bearing
Service Hole Small	•	•	•	•	–
Service Hole Large	–	–	•	•	•
Web Notch	•	•	•	•	–
Lip Notch	•	•	•	•	–
Web Hole	•	•	•	•	•
Flange Punch	Dimple	Hole	Dimple	Dimple	–
Tab Tool	–	–	–	–	•
Swage	•	•	•	•	•
Truss End Mitre	•	–	•	•	–
Electrical Req.	400 - 460V 50 - 60 Hz	400 - 460V 50 - 60 Hz	400 - 460V 50 - 60 Hz	400 - 460V 50 - 60 Hz	400 - 460V 50 - 60 Hz
Hydraulic Tank	40 Litre (10.5 gal) with Accumulator & Cooler	40 Litre (10.5 gal) with Accumulator & Cooler	40 Litre (10.5 gal) with Accumulator & Cooler	40 Litre (10.5 gal) with Accumulator & Cooler	75 Litre (20 gal) with Accumulator & Cooler
Dim. L x W x H	2.7 x 0.6 x 1.4	3.7 x 0.75 x 1.4	3.4 x 0.75 x 1.4	3.4 x 0.75 x 1.4	4.5 x 0.75 x 1.6
Weight	1525kg (3360lb)	2100kg (4630lb)	1900kg (4180lb)	2100kg (4630lb)	4500kg (9920lb)
Decoiler	1.5 Tonne Powered (3300lb)	1.5 Tonne Powered (3300lb)	1.5 Tonne Powered (3300lb)	3.0 Tonne Powered (6600lb)	3.0 Tonne Powered (6600lb)

- NOTES: 1. Machines are factory set to produce one profile size
 2. Other web sizes available by request
 3. Machines are factory set to produce within 2 sequential gauges range
 4. Refer to our website for approved and tested software design packages

Specifications may change without notice. ©2011 Howick Limited

Howick

DESIGNERS AND MANUFACTURERS OF THE
WORLD'S BEST STEEL FRAMING MACHINES

HEAD OFFICE SALES

New Zealand & International
Tel: +64 9 534 5569

sales@howickltd.com

UK OFFICE SALES

UK, Europe & Middle East
Tel: +44 1423 888291

uksales@howickltd.com

Up-to-date contact details for all countries are always available on our website.

www.howickltd.com