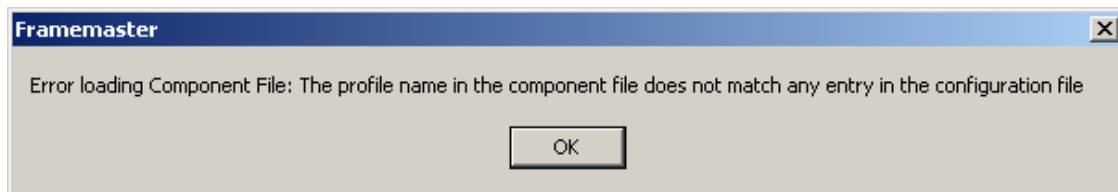


CSV Error Messages

Detail of the specific error messages you may encounter when loading a CSV file:

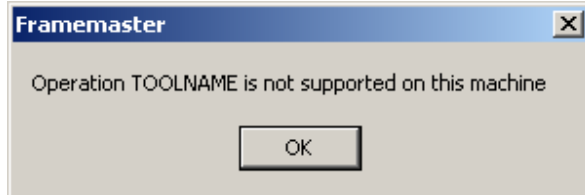
Profile Error



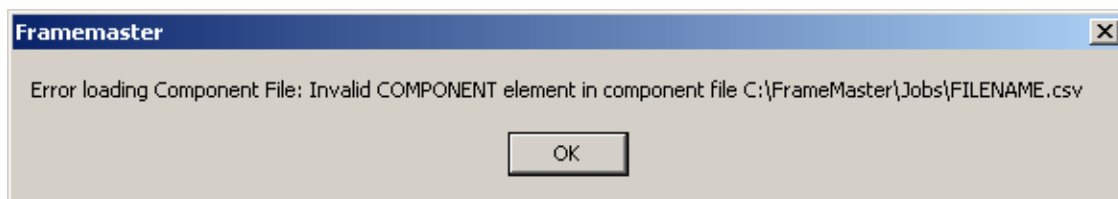
Cause:

The Profile Name in the CSV does not match the Profile Name in the INI File

Component Error

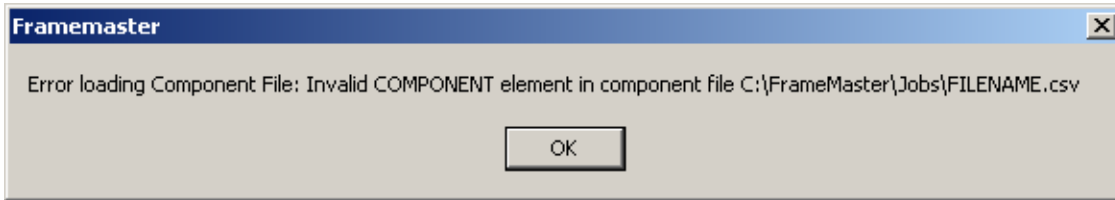


(click OK and this message is followed by)



Cause: A Tool Name in the CSV does not match a Tool Name in the INI File

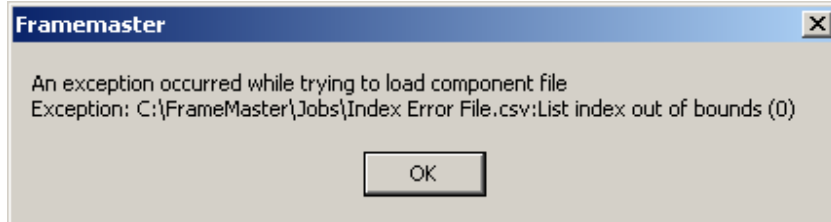
Comma Error



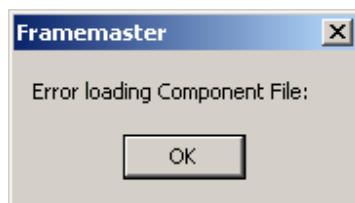
Cause: The last instruction in a line of the CSV file ends in a comma.

Note: This can be caused by editing a file in Microsoft Excel which will reformat the text as columns and add unwanted commas to the shorter lines.

List Error



(click OK and this message is followed by)



Cause:

The CSV file contains blank lines under the last instruction lines (delete the blank lines)