

Money Back Guarantee

We are so confident of the reliability of our machines that we are now offering a Money Back Guarantee on our standard H300 and H500 machines. If you are not happy with the performance or support for your Howick machine in the First 6 months return it to us and we will refund your purchase price. For full terms and conditions please contact your Howick Representative.

New Panel Software Released

Howick have developed a basic panel software package to be supplied with all new machines, it has been designed to be a useful tool for the production of simple panels allowing for the design of infill panels and frames as well as simple structures. The package allows for the infill panels to be designed onsite then emailed to the factory for manufacture reducing the chances of errors being made while copying dimensions from sketch drawings.

The package will also be offered for sale in two versions the first will allow the user to draw and save files and the second will have the added feature of machine file export. The package could be supplied to your customers as a stand alone program so that they can design their own panels and supply you with the files for production. If you were to provide them with costing as accepted in the package (cost of fixings and cost per linear meter) it would allow them to accurately price their own jobs.

The package gives the customer details of total material, panel weight, number of screws and material price.

For a demo version of this package or to purchase a copy contact your Howick representative.

New Software Links

There are also two new links under development that will be available soon Tekla www.tekla.com and SCIA www.scia-online.com are developing their links to the Howick machines.

For a full list of software packages visit www.howickltd.com

Howick reduces the Framing Machines Carbon Foot Print.

Howick have kept the length of their machines as short as practically possible to reduce the length of the waste piece that is produced when the machine is turned off. While steel is recyclable reducing the wastage from a coil has many benefits not only cost savings but also if the amount of waste produced is reduced there are less truck loads required to be sent for recycling in a year. With this in mind the latest machine control programs reduce the waste length to the minimum amount possible, reducing a the normal waste piece from 2700mm in the H500 machine to potential 300mm.

The latest generation machines have been fitted with the latest Energy Efficient SEW motor gearbox units which reduced the power consumption for the machinery and save on the running costs.

The power consumption for the Standard machines are

	H300	H500
Power use during operation	2.6 kw/h	4.1 kw/h
Power use at rest	0.2 kw/h	0.2 kw/h

To remove your name from our mailing list, please [click here](#).

Questions or comments? E-mail us at info@howickltd.com www.howickltd.com

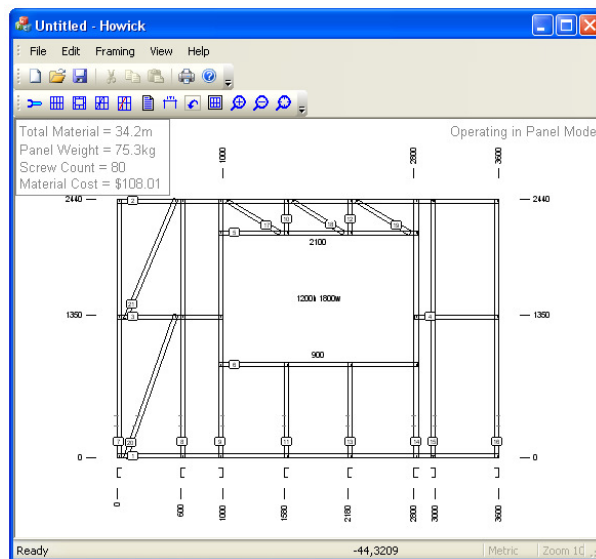
February 2009



Come and See Us At

Futurebuild
3-5 March 2009
Earls Court, London, UK
Stand 2571

Designbuild
Sydney Convention and
Exhibition Centre Australia
21 - 23 May, 2009
Stand P12



Introducing the TH200

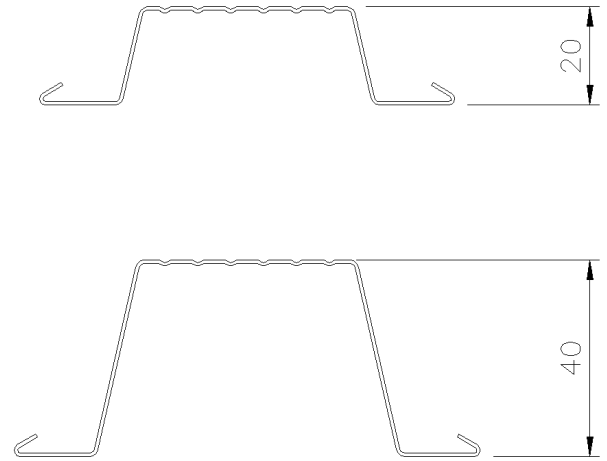
Howick also produce a range of machines for the construction industry that produce add-on products used in building construction.

Here we introduce the TH200 which is a dual profile Tophat and Ceiling batten machine.

The TH200 is a rollforming mill that is controlled by an easy to use touch screen that allows the user to input the lengths and batch quantities eliminating the need to manually cut the profiles to size reducing waste.

The TH200 is supplied with a 1.5 tonne Decoiler that is safety interlocked to the machine.

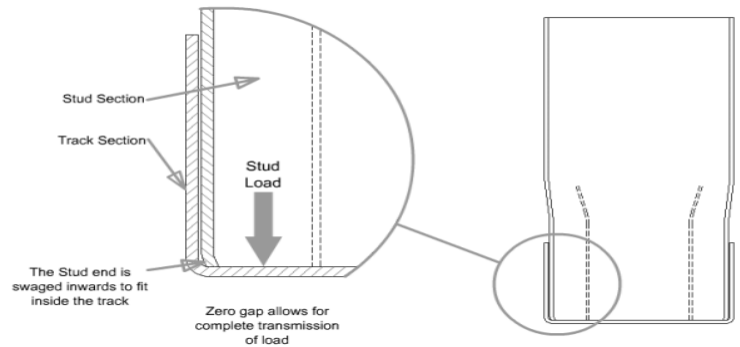
Other custom profiles are available on request.



H300 Machine Improvements

The latest generation of the H300 Frame and Truss machine has recently had a major upgrade that will improve the structural capacity of the framing it produces.

The Unique End Bearing Cut-off that is a standard feature on the H500 and H700 machines is now available as a standard tool on the H300 machines as well. This means that now thinner gauge materials can also benefit from the advantages of True End-Bearing increasing the ability of multi story construction using the H300 machines.



Veerhuis' EPS Buildings

Veerhuis who are based in the Netherlands have a unique patented building system that uses the extreme insulating properties of EPS foam with their Plaster and Mortar systems. The EPS blocks surround the Howick framing that provides the structure of the building for the walls, floors and roof trusses. Veerhuis' framing is supplied by a Howick customer who has machines in the Netherlands.

By embedding the steel structure in the EPS there is no cold bridging which combined with the insulation properties of the EPS energy savings of up to 70% can be made in both winter and Summer.

The images to the right show a project that has been completed recently in the UK.

The many advantages of this system include

- Lightweight components and finished structure.
- Rapid assembly and reduced time to weather tightness.
- Highly insulated building.
- The patented Mortar system provides a strong low maintenance finish.
- Not rot, bugs, rodents, termites.
- No mould or humidity problems.

One of the key projects that Veerhuis has associated itself with is the Global Shelter Project "Shelter for All." The Veerhuis system is very well suited to the production of low cost, low maintenance buildings that also can be rapidly constructed with low skilled labour. When combined with Howick Framing for the supporting Panels and Trusses.

For more information visit www.veerhuis.biz

Or email info@veerhuis.biz



Quality Through Advanced Technology at W A Browne (Taken from Vertex Vision)

W A Browne is a company which has seen, and continues to see, impressive and award winning progress since its formation some 30 years ago.

Home is a 40,000 sq ft office and factory facility in Billingham, County Durham, where the company employs up to 280 people - 250 of whom are directly employed tradespeople backed by 28 administrative staff. W A Browne also has a production facility in Portugal.

Many tradespeople and staff are long serving employees with up to 25 years service with the company.

Primarily known for quality dry wall manufacturing and installation for leading house builders and commercial developers including Bellway Homes, Charles Church, George Wimpey, Redrow Homes, Shepherd Group and Taylor Wimpey Group, the company almost immediately after formation moved into light gauge steel framing.



“Reaping dividends”

Says General Manager Martin Jamieson (himself a comparative veteran of 18 years service with the company):

“Our chairman Bill Browne, now based in our Portugal facility, is passionate about steel framing and we currently run three Howick framing machines two here in the UK and one in Portugal.



It was via Howick, in fact, that we were introduced to Vertex and we put the BD system in when we bought our newest framer”.

Continuing the theme, Martin says the partnership is reaping dividends in the Portuguese factory:

“Bill Browne spotted a market opportunity for modern methods of construction over there and, working to our designs, is building villas in ONE THIRD OF THE TIME compared to traditional construction methods.

We have another, earlier, software system to send files to our older Howick machine, but essentially everything now runs off Vertex”.

Vertex faster, more accurate

The two designers, Karl McNaughton and Richard Dawson, say their experience of Vertex BD is in its early days but they like the flexibility of the system and praise in particular the viewing package:

“A lot more realistic than anything else and giving a ‘walk through’ image which allows you to make changes faster and more accurately”.



The pair tend to use BD as a framing package without currently using the estimating feature though recognising the huge potential of the system as they get to know and explore it:

“BD is a clever piece of software and unbelievably accurate. Also we have the Helpdesk facility at Vertex on tap when we need it.”

Solid order books

“Their guys did a factory tour here recently and we’re going back soon to do some more key user training. The Vertex back up is excellent...”

The last non-Vertex system we used, which is now being phased out, just came with a disk and nobody at the end of a phone - like ‘best of luck, lads!’”

Martin Jamieson says the steel side continues to grow even with the current slowdown and W A Browne has solid order books for at least the next 12 - 18 months: “Though residential has slowed, good builders are still building and we’re looking to advanced technology like Vertex to keep us ahead both technically and competitively”.

“Vertex BD is a clever piece of software and unbelievably accurate.” Martin Jamieson, General Manager, WA Browne



H600 Floor Joist Machine

The H600 machine combines the tooling of our first generation Floor Joist Machine with the functionality of the Howick Framing Machines, this allows floor cassettes to be made in a just in time process. Howick's lip-roller unit allows the lips to be turned on and off as required for the production of the un-lipped perimeter channels and the lipped joists. This means the perimeter channels and the joists can be made in the order needed without the need to reset the machine between profiles as with other systems.

The H600 machine produces a fixed section size between 150mm - 300mm and a material thicknesses between 1.6mm and 2.5mm.

The H600 machine includes tooling for all the required connections and also Howick's double swaged service hole. The double swaging process stiffens the section where the large 140mm hole is punched.

The fixing tab is punched to include the fixing screw holes in the flat position and are then folded into position when needed for assembly with a special tool. The small punching behind the tab allows for a holding bar to be used to hold the joist in position while it is being fixed in place.

There is additional capacity for specialist tooling if required such as additional fixing tools (bolt holes) and service holes.

The H600 sections have been added to Vertex's design package and can seamlessly be integrated into buildings using the both Howick framing and other building methods. The H600 also works with a range of the leading design packages.

For a full list of software packages visit www.howickltd.com



Fixing Tab Flat



Fixing Tab in Position



Swaged Service Hole



Joist Connection



Howick Machine Sales Offices

Howick now offers sales and support directly through both its New Zealand and UK Offices as well as having distributors in South Africa, Lithuania and South East Asia.

Howick Offices

Howick Limited

Contact:
Deon Anderson
+64 9 5345569

117 Vincent Street
Howick
Auckland
New Zealand
deon@howickltd.com

Howick UK

Contact:
Nick Coubray
European Manager
+44 1423 888291

Unit 1, 25 Camwal Road
Harrogate
HG1 4PT
United Kingdom
nick@howickltd.com

Distributors

Howick Rollforming Africa (Pty) Limited

Contact:
Craig During
Tel +27 21 526 0457
Fax +27 21 526 0311
craige@howickafrica.com

Baltigora (Lithuania)

Contact:
Anna Davidiuk
Tel. + 370 5 273 19 20
Fax + 370 5 261 05 56
howick.baltic@gmail.com

South East Asia Distributer

Contact:
Lawrence Foo
Tel. + 60 3 8063 2281
Mob +60 12 372 5950
Fax + 60 3 8063 2282
lawfoo@nbrnetwork.com